

The Humboldt Woodworking Society is a group of professional, amateur, and hobbyist woodworkers. We meet monthly to share ideas and techniques, participate in the College of the Redwoods Wood Fair each year and have a good time talking shop and helping one another grow in our craft. Annual dues are \$25.00.

DECEMBER 2007 NEWSLETTER

ANNUAL HOLIDAY PARTY POT LUCK DINNER

WHEN

Thursday, December 13, 2007
6:30 pm to 9:30 pm

WHERE

Conference Room
Bayshore Inn Best Western Motel
3500 Broadway, Eureka

POT LUCK

Please bring a food dish of your choice and a drink of your choice for each person in your party. Coffee and place settings will be provided.

OPTIONAL VOLUNTARY GIFT EXCHANGE

Anyone wanting to participate in the gift exchange should bring a gift that is either home-shop-made or has a price of \$15 or less.

DIRECTIONS

The Bayshore Inn is right next to Marie Callender's on Broadway in Eureka. Find the Conference Room near the swimming pool up an outdoor flight of stairs on the second floor. There will be signs for HWS pointing the way. If you have any trouble, ask for directions at the front desk.

THANKS

Thank you to our member and co-owner of the Bayshore Inn, Jeanne Watson-Carson for hosting our Annual Holiday Party this year and for many previous years. Your generosity is greatly appreciated.

If you have any questions, call Sue Ashford at 442-9479.

Humboldt Woodworking Society Minutes November 29, 2007

These minutes will be included in the next newsletter.

JANUARY MEETING – Thursday, January 31, 7 PM

The January meeting will be held at Angelo's Pizza Parlor at 215 W. 7th Street in Eureka (444-9644). The Society will provide Pizza, Beer, and Soft Drinks.

The primary purpose of the January meeting is to **ELECT NEW OFFICERS FOR THE 2008 YEAR**. The Society is actively seeking new officers. Do not be afraid to nominate yourself. If you would like to nominate someone else, please talk it over with them and confirm that they are willing to serve. Anyone who will be nominated or is self nominating, is invited to contact the person (listed at the bottom of this newsletter) currently serving in the position to find out what it involves. If you are currently serving in a position and would like to continue, please nominate yourself or ask someone to nominate you. Nominations will be accepted from the floor at the January meeting.

WOODWORKING FACT OF THE MONTH: Wood Dimensional Stability

Everyone knows that wood shrinks as it dries. But did you know that wood is dimensionally stable when moisture content is greater than the fiber saturation point – that means, when it is wet as in a living green tree?

Wood does not shrink uniformly as it dries. It shrinks most in the direction of the annual growth rings (tangentially), about half as much across the rings (radially), and only slightly along the grain (longitudinally). The combined effect of radial and tangential shrinkage can distort the shape of wood pieces as shown in the diagram. This information is from *Wood Handbook: Wood as an Engineering Material* published by the Forest Products Laboratory of the USDA Forest Service (2002, Algrove Publishing). This entire publication is available for downloading at <http://www.fpl.fs.fed.us/documnts/fplgtr/fplgtr113/fplgtr113.htm>.

Softwoods tend to be more dimensionally stable than hardwoods, and Redwood is

the most dimensionally stable wood listed in the Handbook.

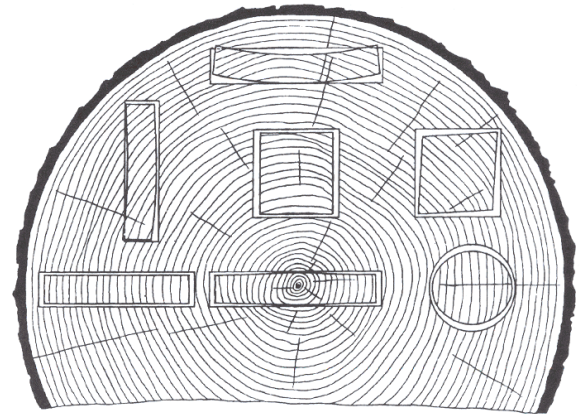


Figure 3-3. Characteristic shrinkage and distortion of flat, square, and round pieces as affected by direction of growth rings. Tangential shrinkage is about twice as great as radial.

When you are planning your next project, keep the dimensional stability of wood in mind, and remember that quarter sawn lumber is much more dimensionally stable than flat sawn.

CLASSIFIED AD: WANTED: 14" or 15" Bandsaw in good working condition. Call or email Don Appleton – 725-8067 or cozycabin@saber.net.

FUN WOOD TRIVIA:



Quick Christmas Tree Facts

- There are approximately 30-35 million Real Christmas Trees sold in the U.S. every year.
- North American Real Christmas Trees are grown in all 50 states and Canada. Eighty-five percent (85%) of artificial trees sold in the U.S. are manufactured in China.
- Consumers can locate the nearest recycling program by logging onto www.realchristmastrees.org or calling 1-800-CLEANUP.
- For every Real Christmas Tree harvested, up to 3 seedlings are planted in its place the following spring.
- There are about 500,000 acres in production for growing Christmas Trees in the U.S. Each acre provides the daily oxygen requirements of 18 people.
- The top selling Christmas Trees are: balsam fir, Douglas-fir, Fraser fir, noble fir, Scotch pine, Virginia pine and white pine.
- For more info on Christmas Trees, contact: [USDA National Agricultural Statistics Service, National Christmas Tree Association \(NCTA\)](#)

FUTURE NEWSLETTERS and WEBSITE INFORMATION:

If you have items of interest that you have written or want to write, wood trivia, shop facts or techniques, items for sale, or photos of your finished projects, please submit them for publication in future newsletters to Susan Bicknell at shbdwb@suddenlink.net or call 768-1975 OR to Michael Masumoto at: kai@acm.org .

FUTURE MEETINGS:

December 13, Thursday, 6:30 PM to 9:30 PM, Annual Holiday Social At Bayshore Inn (by Marie Callender's in Eureka)
 January 31, 2008, Election of New Officers, Angelo's Pizza Parlor

OFFICERS:

President	David Kelley	839-0309	
Vice-President	Gary Richmond	725-3693	ironhorse45@hotmail.com
Treasurer	Dave Ashford	442-9479	davisashford@wmconnect.com
Secretary	Sharon Richmond	725-3693	sbritt44@hotmail.com
Librarian	Sue Ashford	442-9479	davisashford@wmconnect.com
Publisher (on leave)	Randy Stowe	725-9750	bowl101@humboldt1.com
Web Page	Michael Masumoto	476-9371	kai@acm.org
Newsletter	Susan Bicknell	768-1975	shbdwb@suddenlink.net
Promotions	Barbara Stamps	442-4378	stampsdevoy@suddenlink.net